

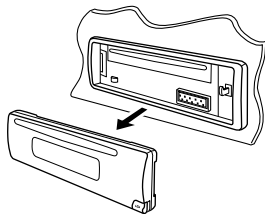
# JVC

## SCHEMATIC DIAGRAMS

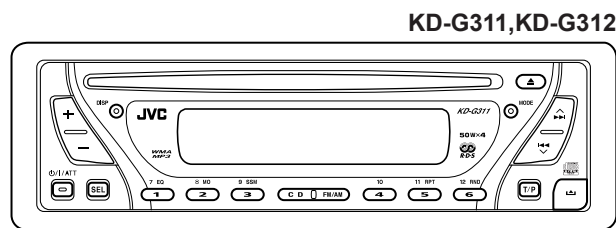
### CD RECEIVER

# KD-G311, KD-G312 KD-G317

CD-ROM No.SML200502



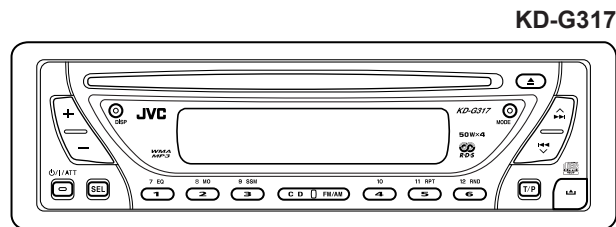
**MP3 WMA**



**KD-G311, KD-G312**

**Area suffix**

E □-----□ Southern Europe  
EX □-----□ Northern Europe  
EY □-----□ Eastern Europe  
EU □-----□ Turkey



**KD-G317**

**KD-G317**

**Area suffix**


EE □-----□ Russian Federation

	KD-G311	KD-G312	KD-G317
STEERING CABLE	○	○	×
CONTROL PANEL	SILVER	BLACK	BLACK

### Contents

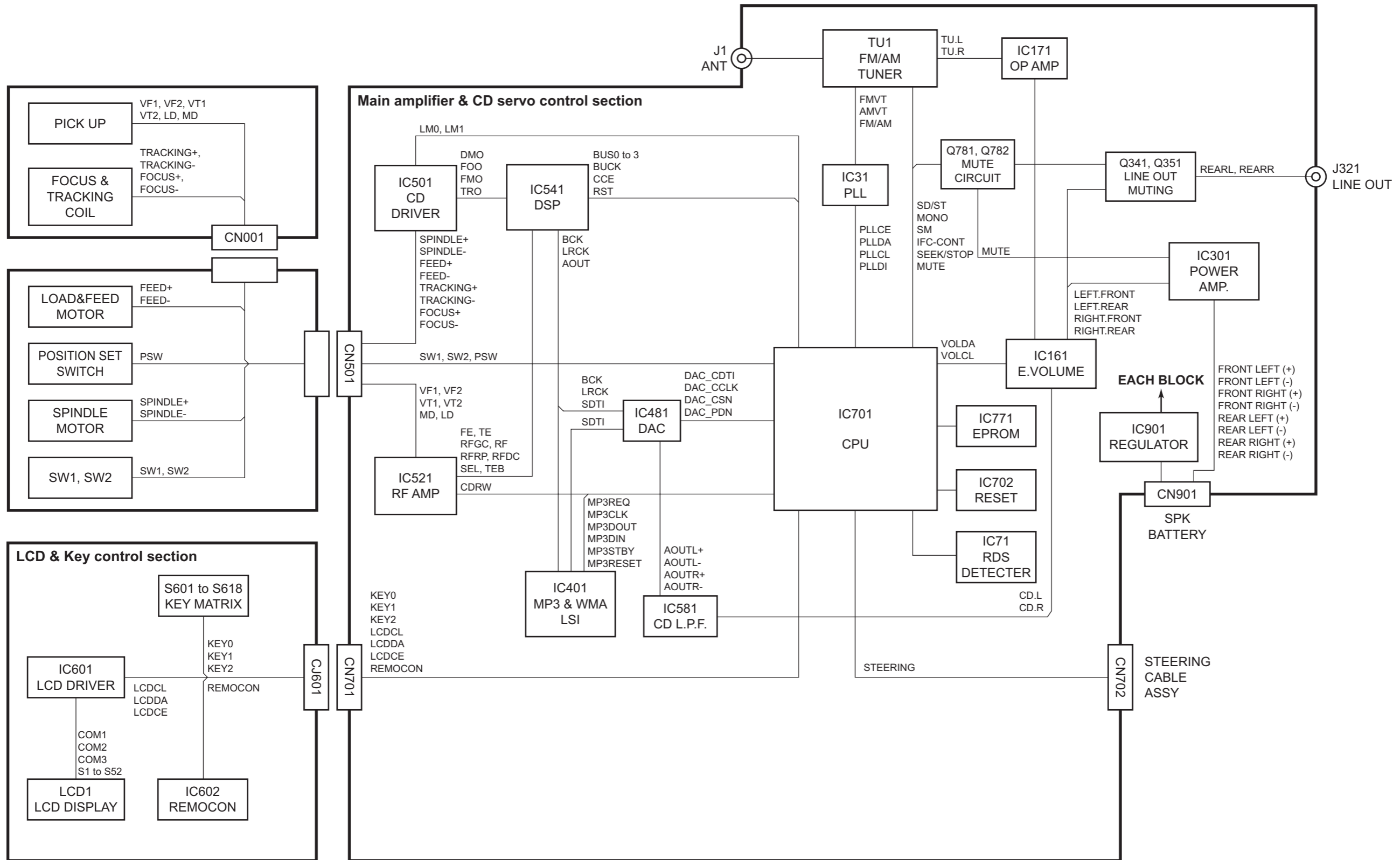
Block diagram (For KD-G311 and KD-G312) .....	2-1
Standard schematic diagrams (For KD-G311 and KD-G312 E,EX,EY,EU version) .....	2-2
Printed circuit boards (For KD-G311 and KD-G312 E,EX,EY,EU version) .....	2-5
Standard schematic diagrams (For KD-G311 and KD-G312 E2,EX2,EY2,EU2 version) .....	2-6
Printed circuit boards (For KD-G311 and KD-G312 E2,EX2,EY2,EU2 version) .....	2-9
Block diagram (For KD-G317) .....	2-10
Standard schematic diagrams (For KD-G317 EE version) .....	2-11
Printed circuit boards (For KD-G317 EE version) .....	2-14
Standard schematic diagrams (For KD-G317 EE2 version) .....	2-15
Printed circuit boards (For KD-G317 EE2 version) .....	2-18

## Safety precaution

 **CAUTION** Burrs formed during molding may be left over on some parts of the chassis. Therefore, pay attention to such burrs in the case of performing repair of this system.

 **CAUTION** Please use enough caution not to see the beam directly or touch it in case of an adjustment or operation check.

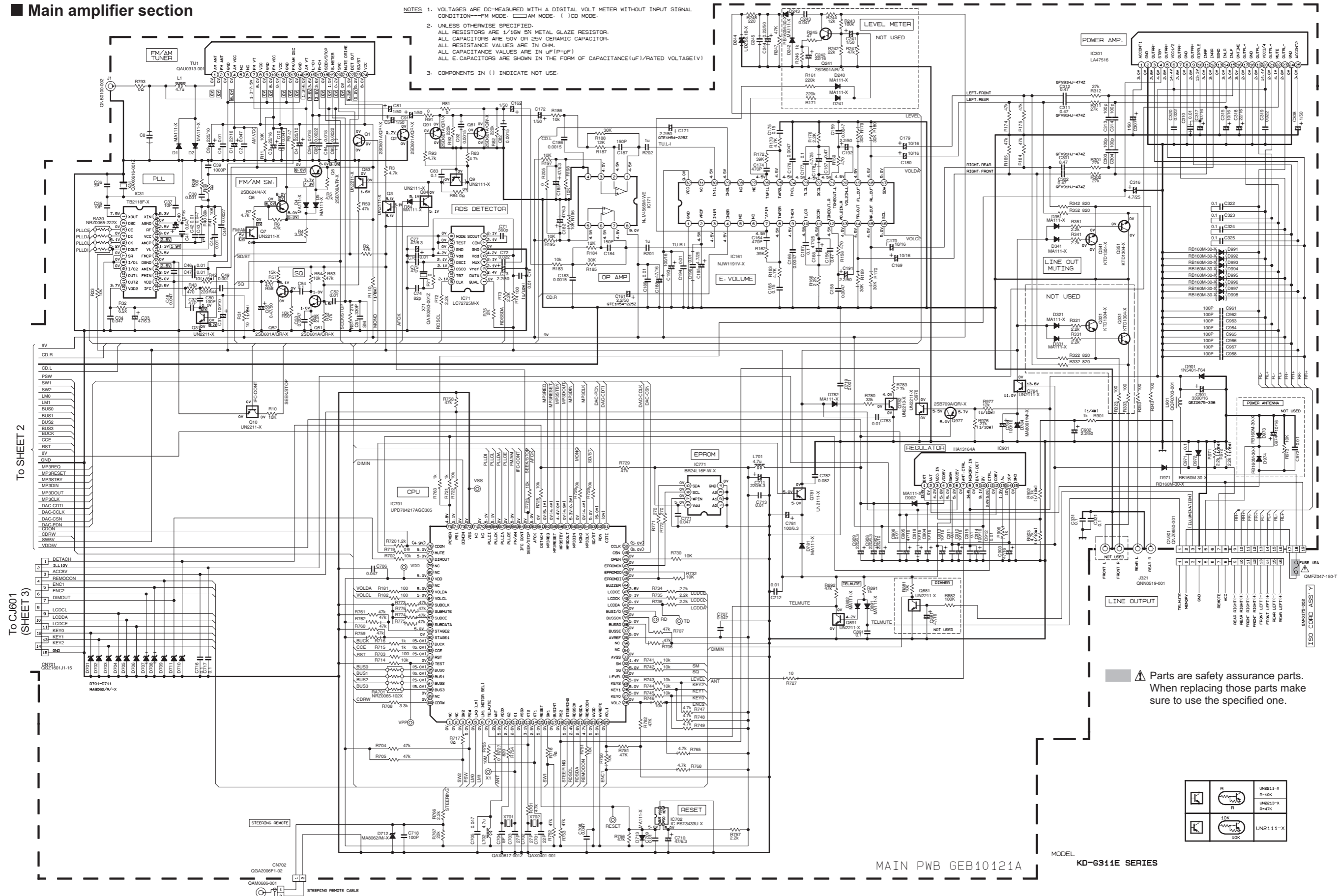
# Block diagram (For KD-G311 and KD-G312)



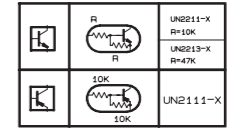
# Standard schematic diagrams (For KD-G311 and KD-G312 E, EX, EY, EU version)

## Main amplifier section

- NOTES
1. VOLTAGES ARE DC-MEASURED WITH A DIGITAL VOLT METER WITHOUT INPUT SIGNAL CONDITION—FM MODE. □ AM MODE. ( ) CD MODE.
  2. UNLESS OTHERWISE SPECIFIED, ALL RESISTORS ARE 1/16W 5% METAL GLAZE RESISTOR. ALL CAPACITORS ARE 50V OR 25V CERAMIC CAPACITOR. ALL RESISTANCE VALUES ARE IN OHM. ALL CAPACITANCE VALUES ARE IN UF(PpF) ALL E-CAPACITORS ARE SHOWN IN THE FORM OF CAPACITANCE(UF)/RATED VOLTAGE(V)
  3. COMPONENTS IN ( ) INDICATE NOT USE.

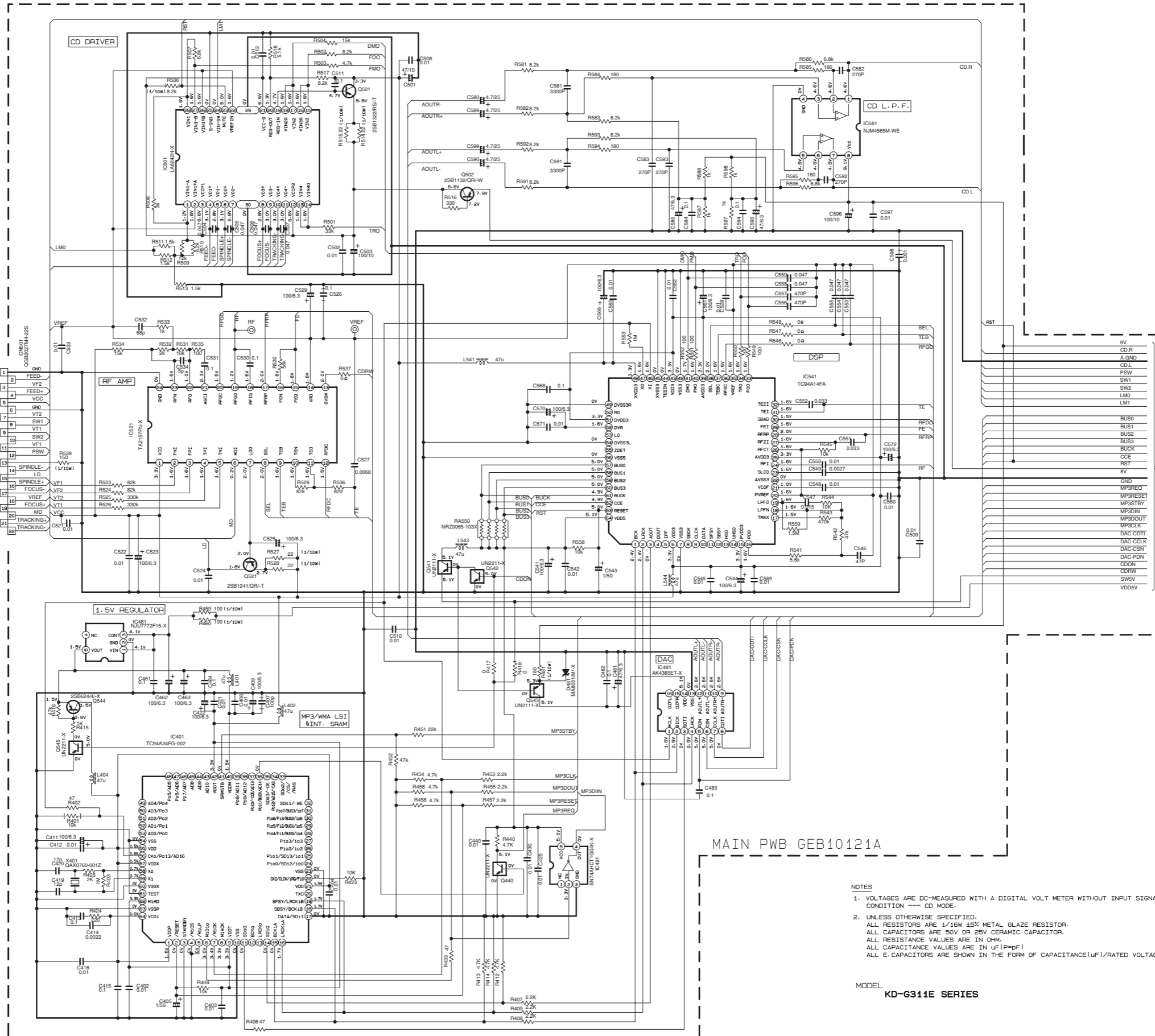
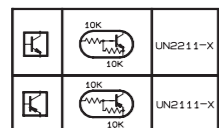
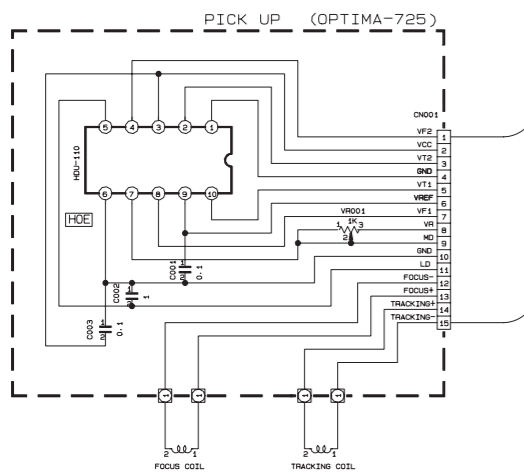
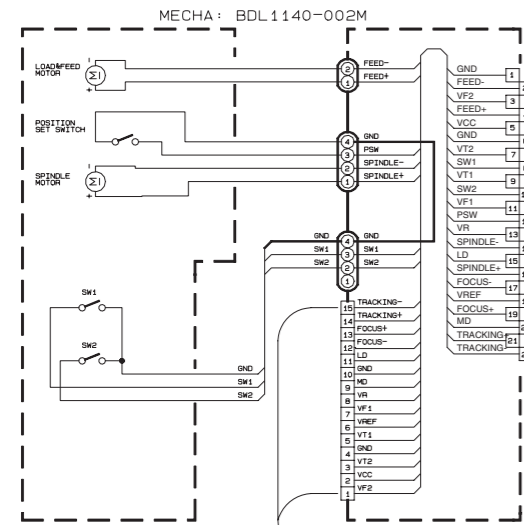


Parts are safety assurance parts. When replacing those parts make sure to use the specified one.



MODEL MAIN PWB GEB10121A KD-G311E SERIES

CD servo control section



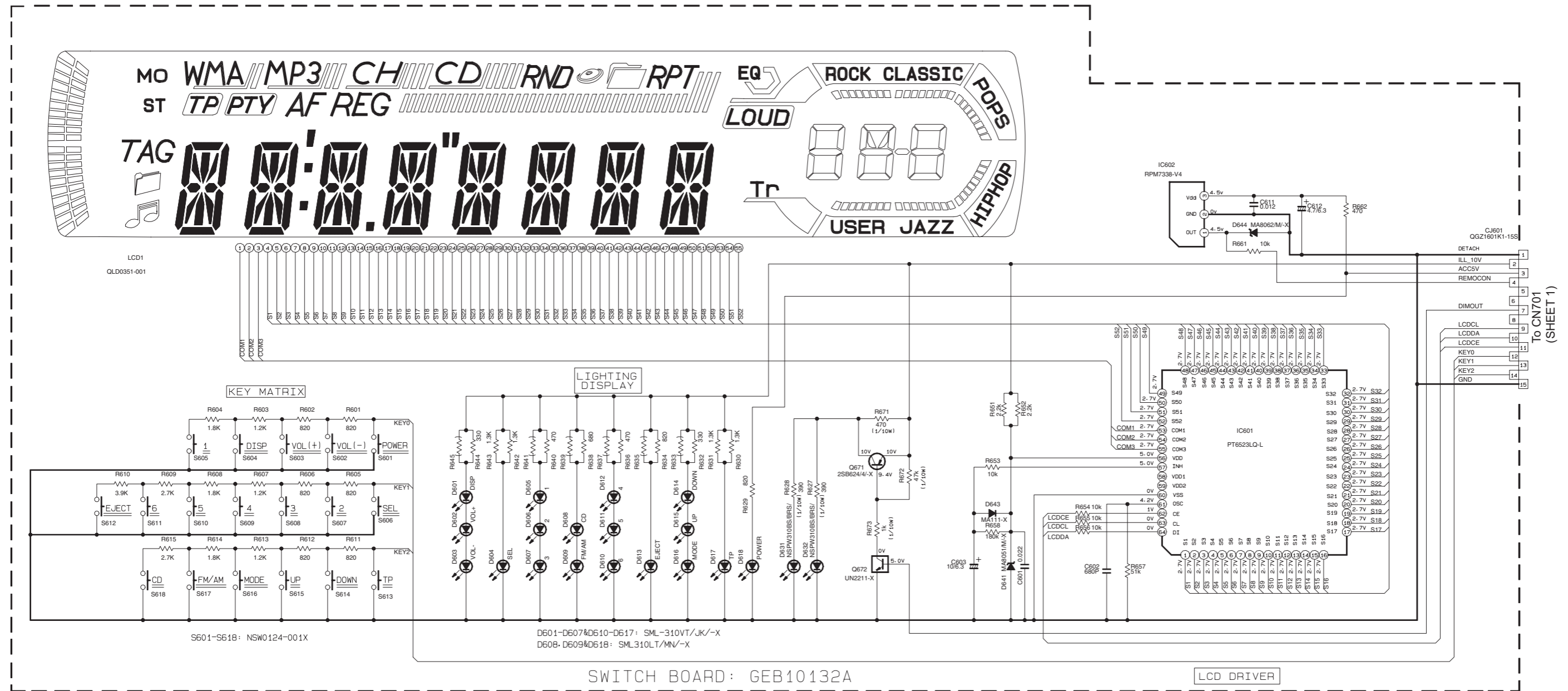
MAIN PWB GEB10121A

- NOTES
- VOLTAGES ARE DC-MEASURED WITH A DIGITAL VOLT METER WITHOUT INPUT SIGNAL CONDITION --- CD MODE.
  - UNLESS OTHERWISE SPECIFIED, ALL RESISTORS ARE 1/16W ±5% METAL GLAZE RESISTOR. ALL CAPACITORS ARE 50V OR 25V CERAMIC CAPACITOR. ALL RESISTANCE VALUES ARE IN OHM. ALL CAPACITANCE VALUES ARE IN uF (P=pF) ALL E. CAPACITORS ARE SHOWN IN THE FORM OF CAPACITANCE(uF)/RATED VOLTAGE(V)

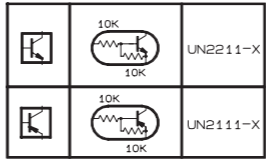
MODEL KD-G311E SERIES

TO SHEET 1

■ LCD & Key control section



FRONT CIRCUIT BOARD SECTION



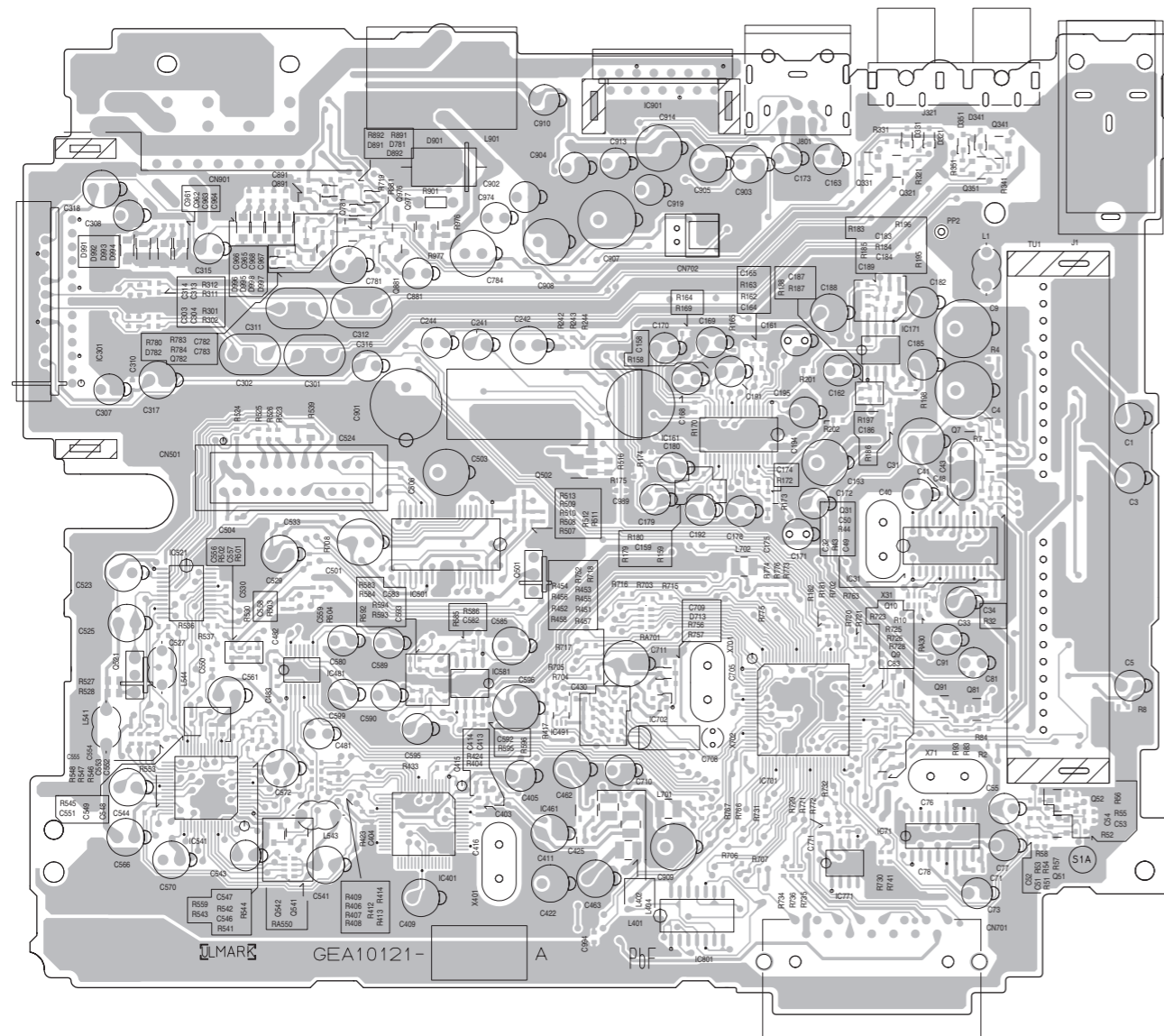
- NOTES
1. VOLTAGES ARE DC-MEASURED WITH A DIGITAL VOLT METER WITHOUT INPUT SIGNAL.
  2. UNLESS OTHERWISE SPECIFIED, ALL RESISTORS ARE 1/16W METAL GLAZE RESISTORS. ALL CAPACITORS ARE 50V OR 25V CERAMIC CAPACITOR. ALL RESISTANCE VALUES ARE IN OHM. ALL CAPACITANCE VALUES ARE IN uF (P=pF) ALL E-CAPACITORS ARE SHOWN IN THE FORM OF CAPACITANCE(uF)/RATED VOLTAGE(V) T --- TANTALUM CAPACITOR.
  3. COMPONENTS IN ( ) INDICATE NOT USE.

MODEL KD-6311E SERIES

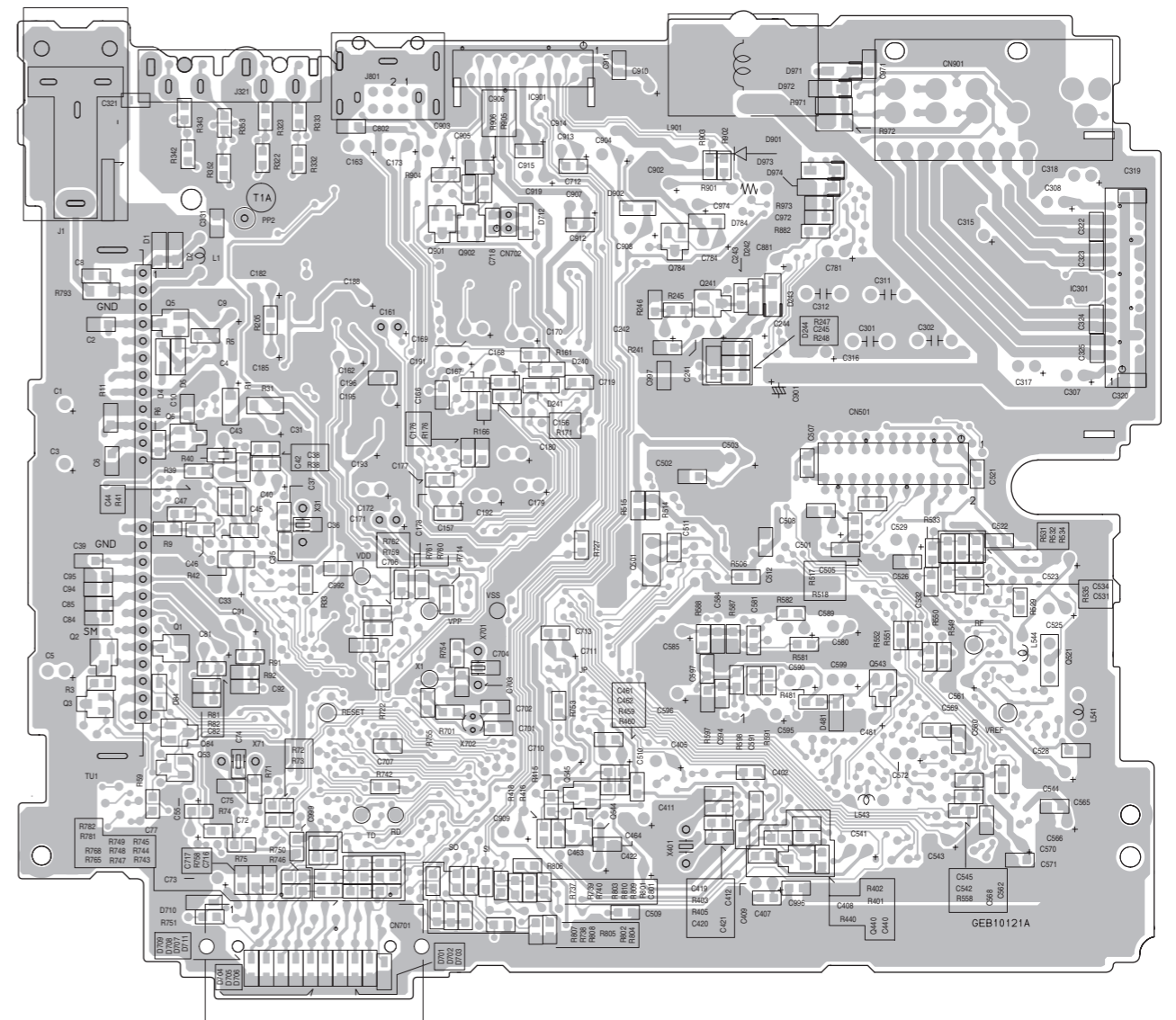
# Printed circuit boards (For KD-G311 and KD-G312 E, EX, EY, EU version)

## ■ Main board

Forward side

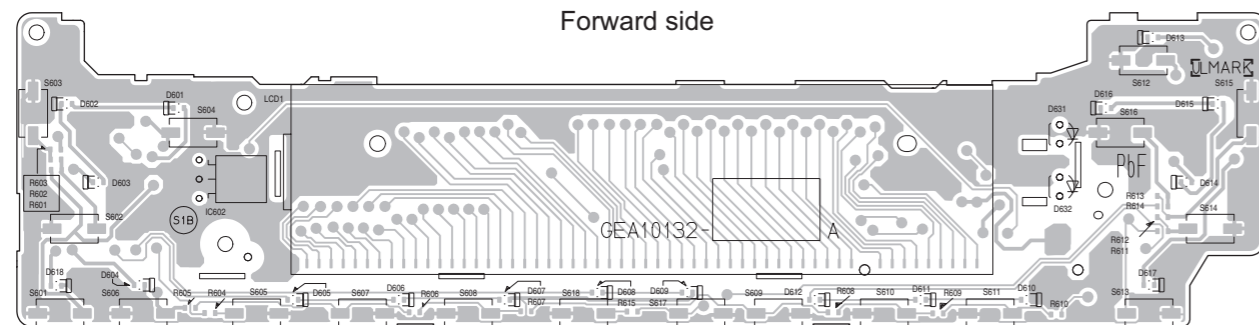


Reverse side

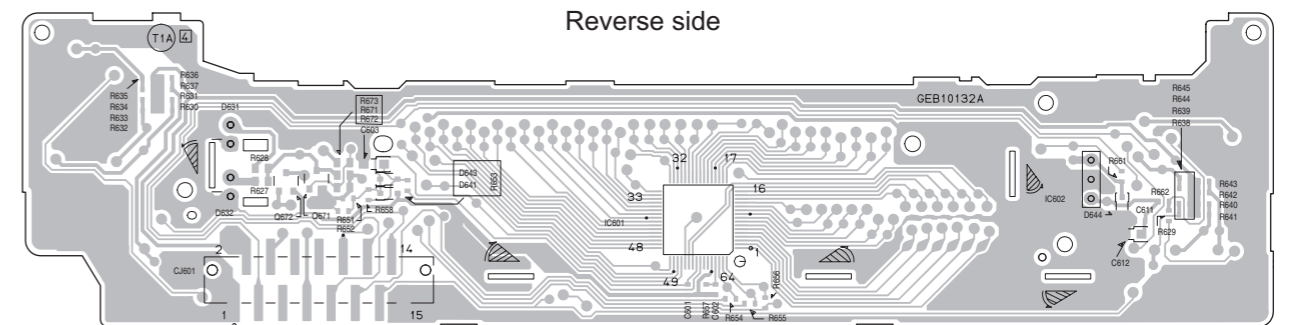


## ■ Switch board

Forward side



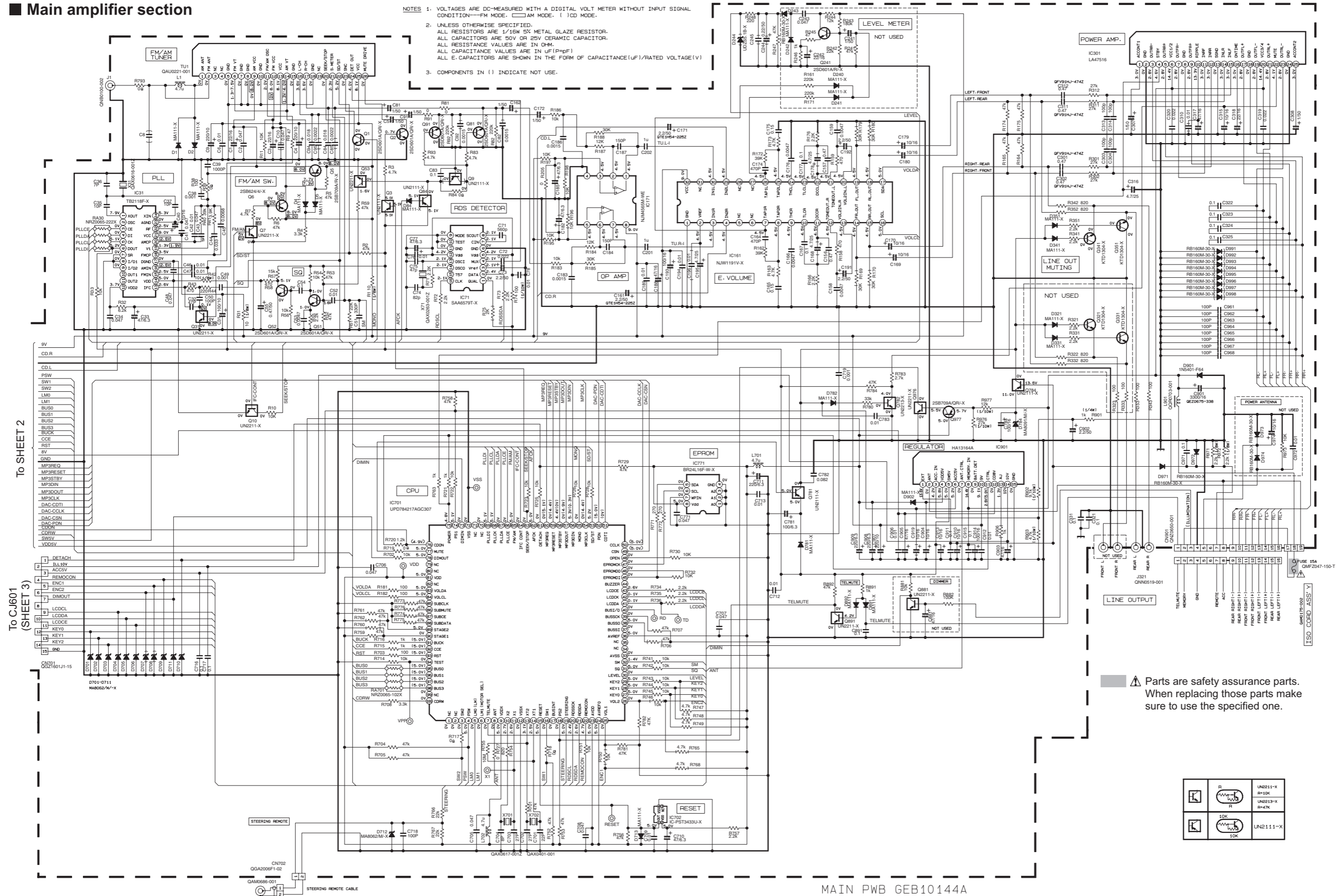
Reverse side



# Standard schematic diagrams (For KD-G311 and KD-G312 E2, EX2, EY2, EU2 version)

## Main amplifier section

- NOTES
1. VOLTAGES ARE DC-MEASURED WITH A DIGITAL VOLT METER WITHOUT INPUT SIGNAL CONDITION—FM MODE. □ AM MODE. ( ) CD MODE.
  2. UNLESS OTHERWISE SPECIFIED, ALL RESISTORS ARE 1/16W 5% METAL GLAZE RESISTOR. ALL CAPACITORS ARE 50V OR 25V CERAMIC CAPACITOR. ALL RESISTANCE VALUES ARE IN OHM. ALL CAPACITANCE VALUES ARE IN UF(PpF) ALL E-CAPACITORS ARE SHOWN IN THE FORM OF CAPACITANCE(UF)/RATED VOLTAGE(V)
  3. COMPONENTS IN ( ) INDICATE NOT USE.

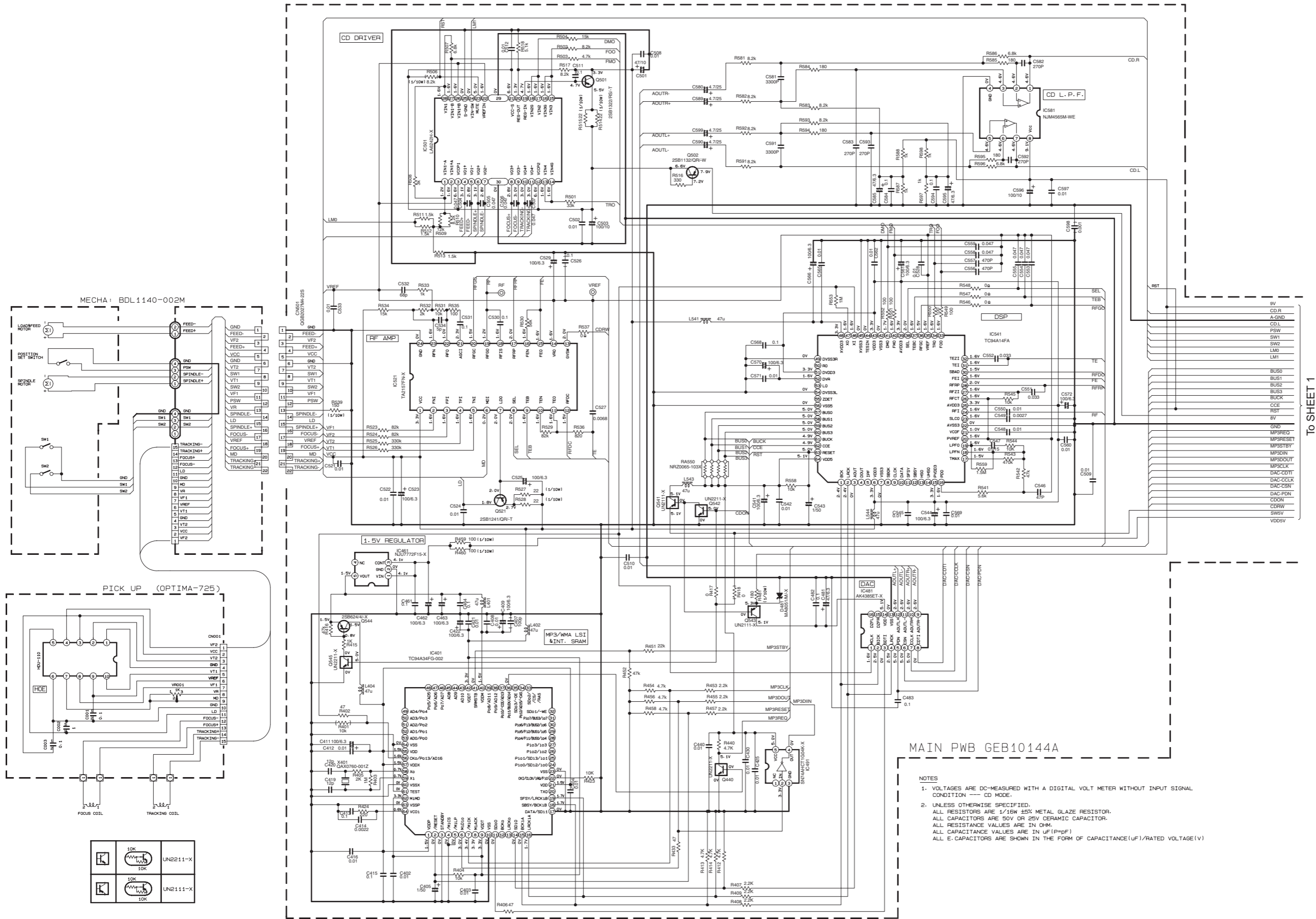


⚠ Parts are safety assurance parts. When replacing those parts make sure to use the specified one.

	R	UN211-X
	C	UN211-X
	C	UN211-X



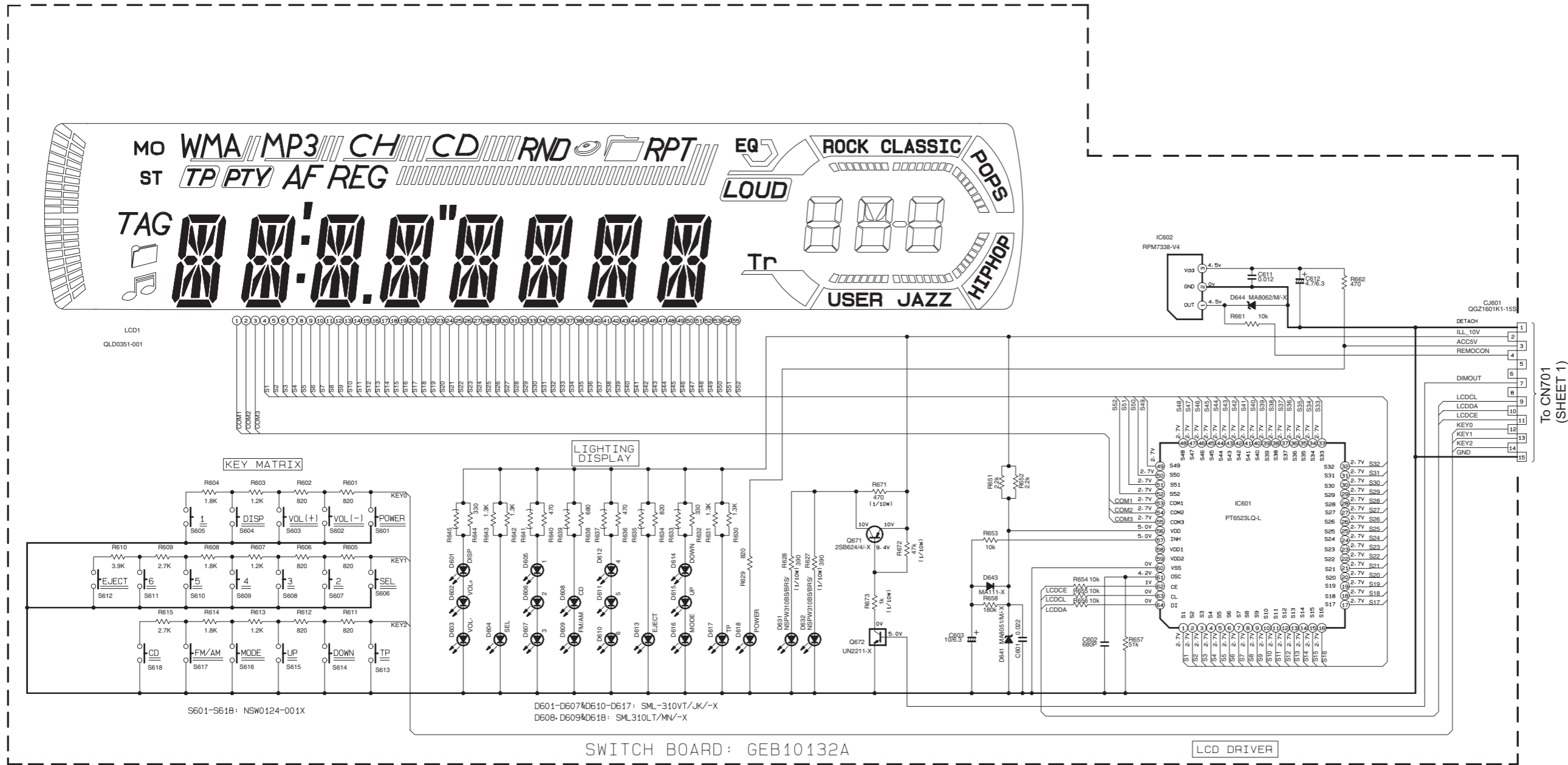
CD servo control section



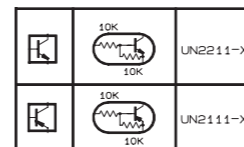
MAIN PWB GEB10144A

- NOTES
1. VOLTAGES ARE DC-MEASURED WITH A DIGITAL VOLT METER WITHOUT INPUT SIGNAL CONDITION --- CD MODE.
  2. UNLESS OTHERWISE SPECIFIED, ALL RESISTORS ARE 1/16W ±5% METAL GLAZE RESISTOR. ALL CAPACITORS ARE 50V OR 25V CERAMIC CAPACITOR. ALL RESISTANCE VALUES ARE IN OHM. ALL CAPACITANCE VALUES ARE IN uF (pF). ALL E-CAPACITORS ARE SHOWN IN THE FORM OF CAPACITANCE (uF)/RATED VOLTAGE (V)

■ LCD & Key control section



FRONT CIRCUIT BOARD SECTION



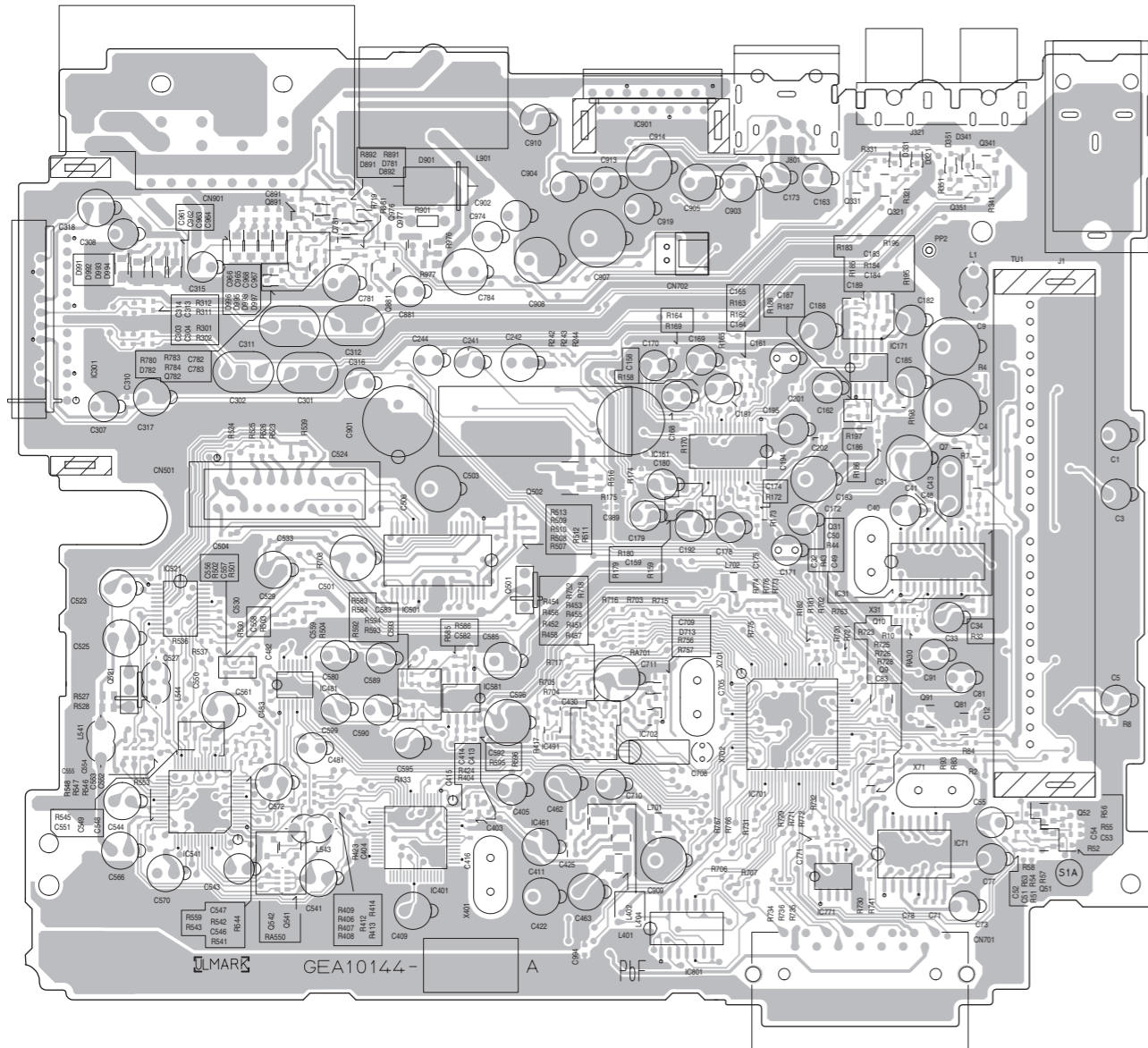
NOTES

1. VOLTAGES ARE DC-MEASURED WITH A DIGITAL VOLT METER WITHOUT INPUT SIGNAL.
2. UNLESS OTHERWISE SPECIFIED, ALL RESISTORS ARE 1/16W METAL GLAZE RESISTORS. ALL CAPACITORS ARE 50V OR 25V CERAMIC CAPACITOR. ALL RESISTANCE VALUES ARE IN OHM. ALL CAPACITANCE VALUES ARE IN uF(P=pF) ALL E. CAPACITORS ARE SHOWN IN THE FORM OF CAPACITANCE(uF)/RATED VOLTAGE(V) T --- TANTALUM CAPACITOR.
3. COMPONENTS IN ( ) INDICATE NOT USE.

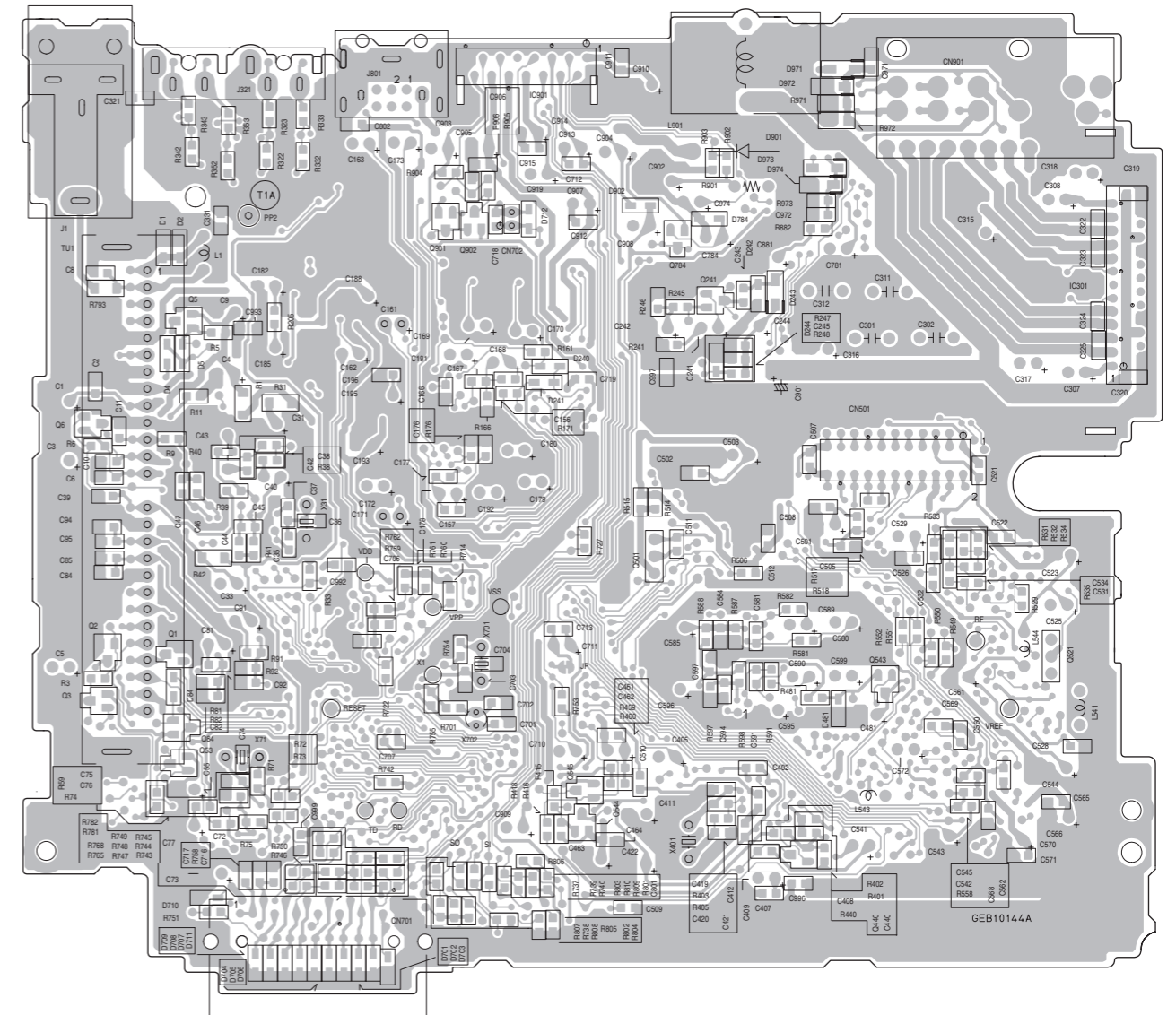
# Printed circuit boards (For KD-G311 and KD-G312 E2, EX2, EY2, EU2 version)

## ■ Main board

Forward side

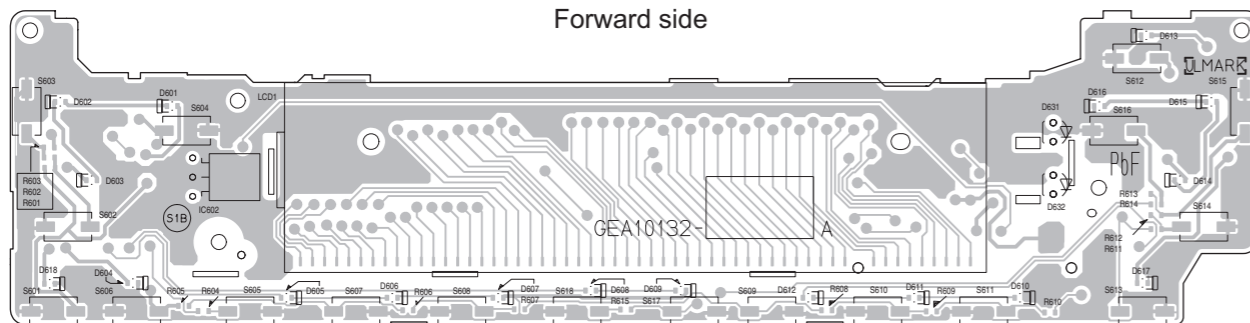


Reverse side

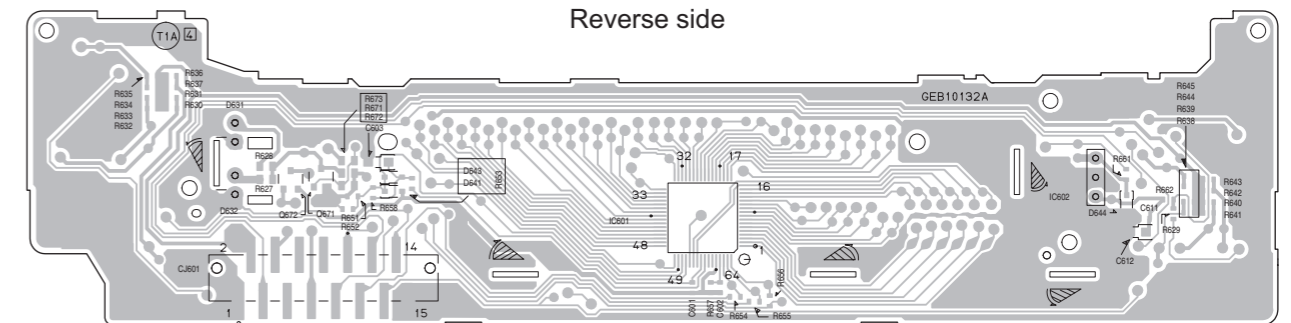


## ■ Switch board

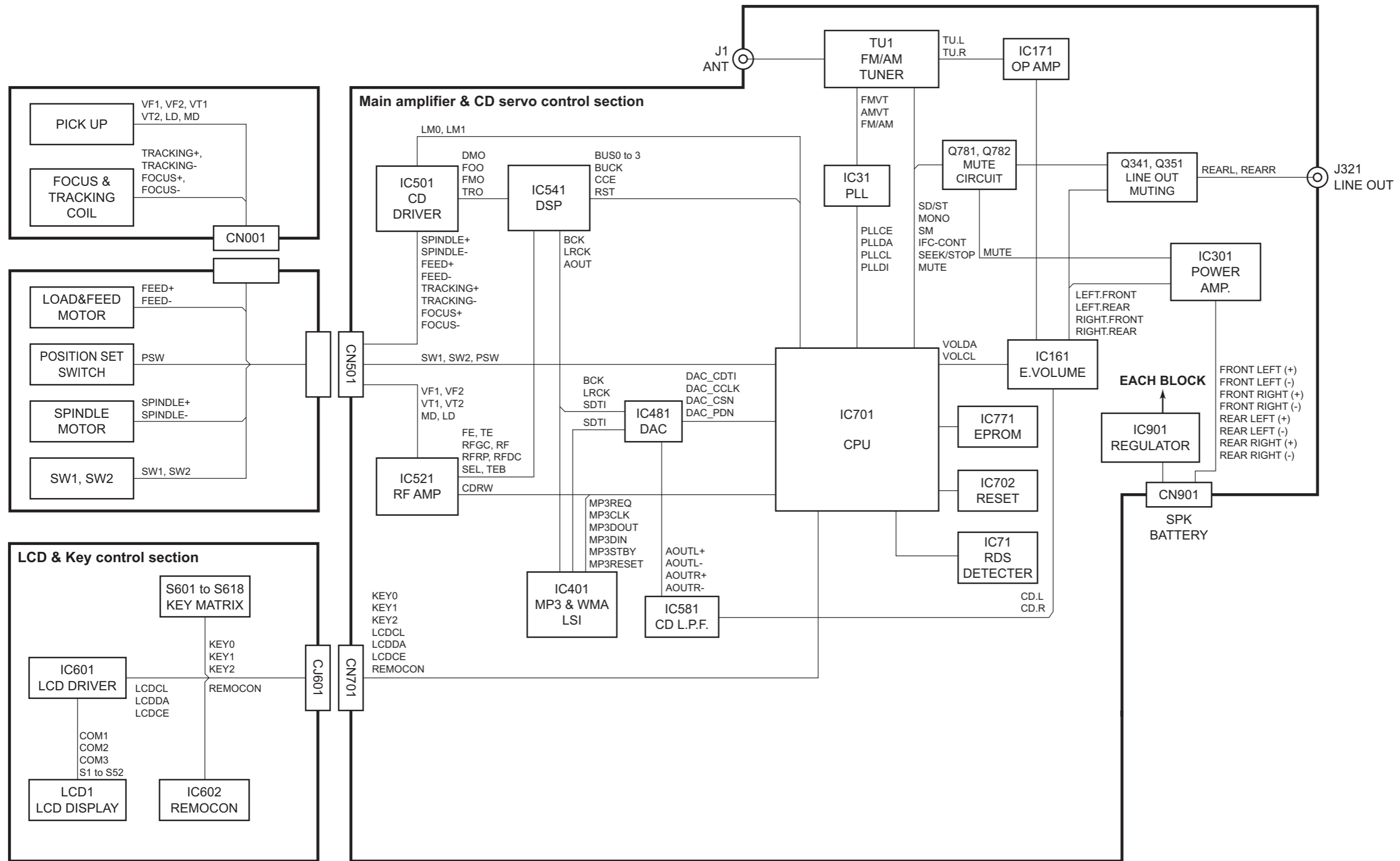
Forward side



Reverse side



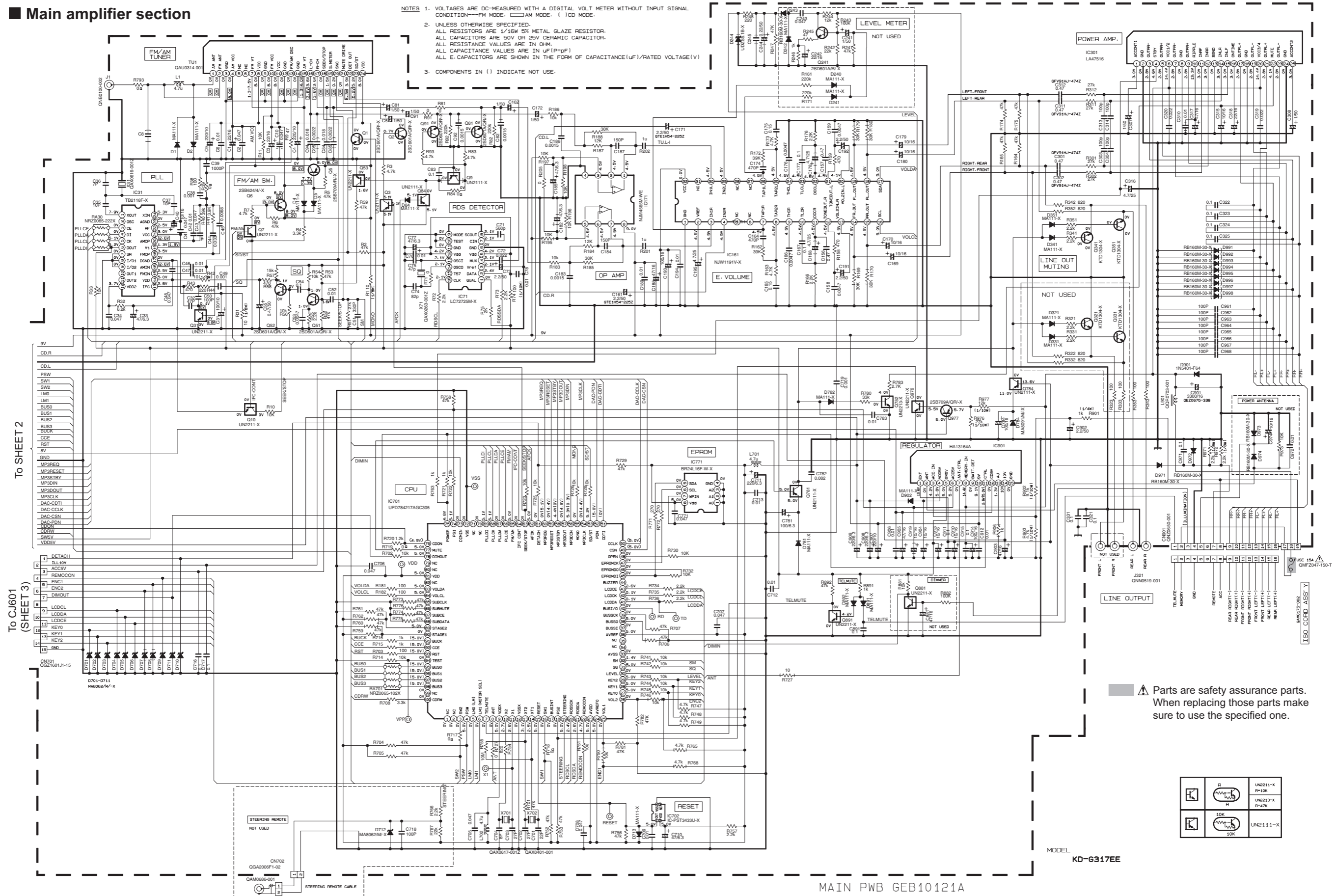
# Block diagram (For KD-G317)



# Standard schematic diagrams (For KD-G317 EE version)

## Main amplifier section

- NOTES 1. VOLTAGES ARE DC-MEASURED WITH A DIGITAL VOLT METER WITHOUT INPUT SIGNAL CONDITION—FM MODE. □ AM MODE. ( ) CD MODE.
2. UNLESS OTHERWISE SPECIFIED:  
ALL RESISTORS ARE 1/16W 5% METAL GLAZE RESISTOR.  
ALL CAPACITORS ARE 50V OR 25V CERAMIC CAPACITOR.  
ALL RESISTANCE VALUES ARE IN OHM.  
ALL CAPACITANCE VALUES ARE IN  $\mu$ F (P=PF)  
ALL E-CAPACITORS ARE SHOWN IN THE FORM OF CAPACITANCE( $\mu$ F)/RATED VOLTAGE(V)
3. COMPONENTS IN ( ) INDICATE NOT USE.



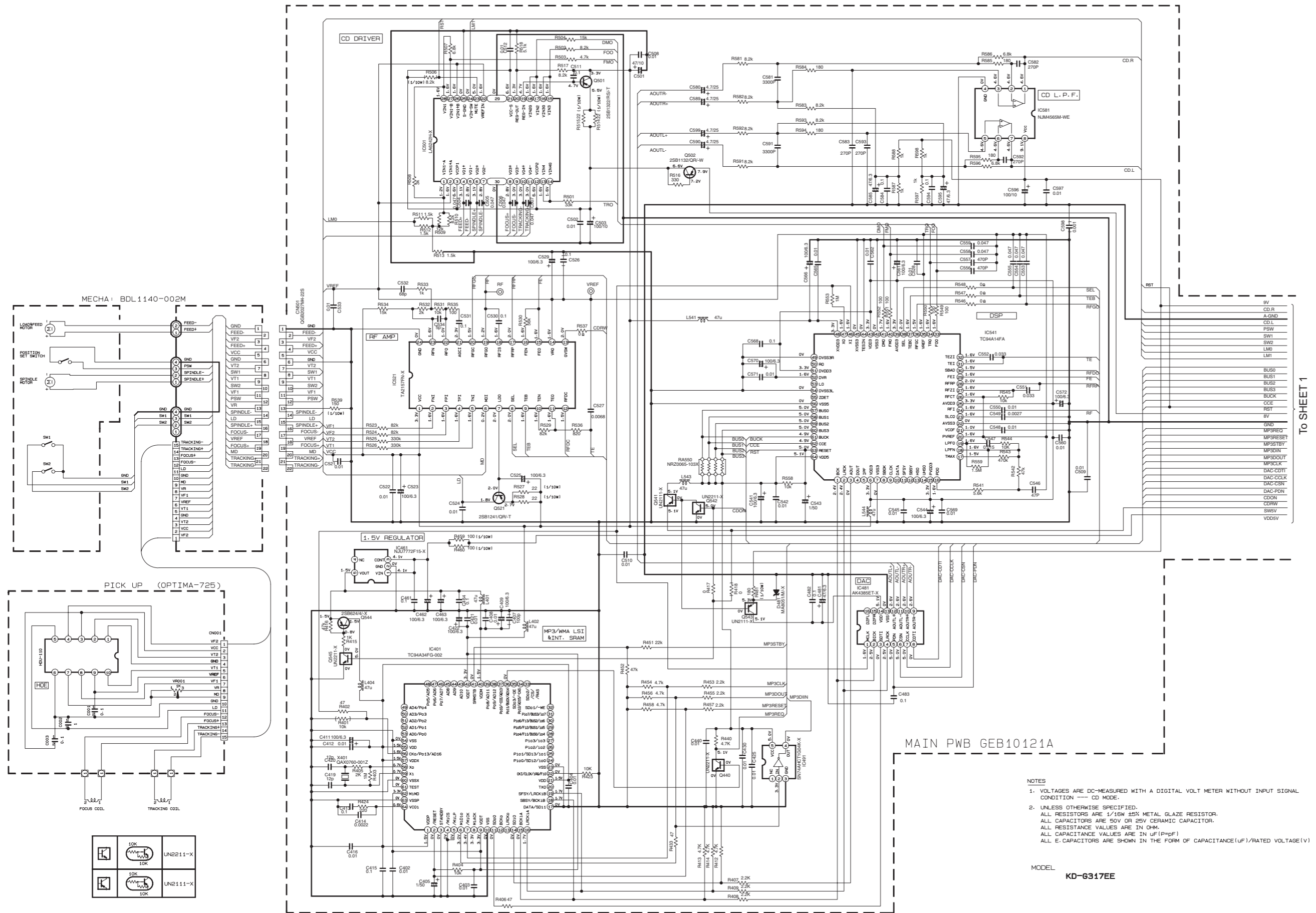
▲ Parts are safety assurance parts.  
When replacing those parts make  
sure to use the specified one.

	UN211-X
	R=10K
	UN213-X
	R=47K
	UN211-X
	10K

MODEL  
KD-G317EE

MAIN PWB GEB10121A

CD servo control section

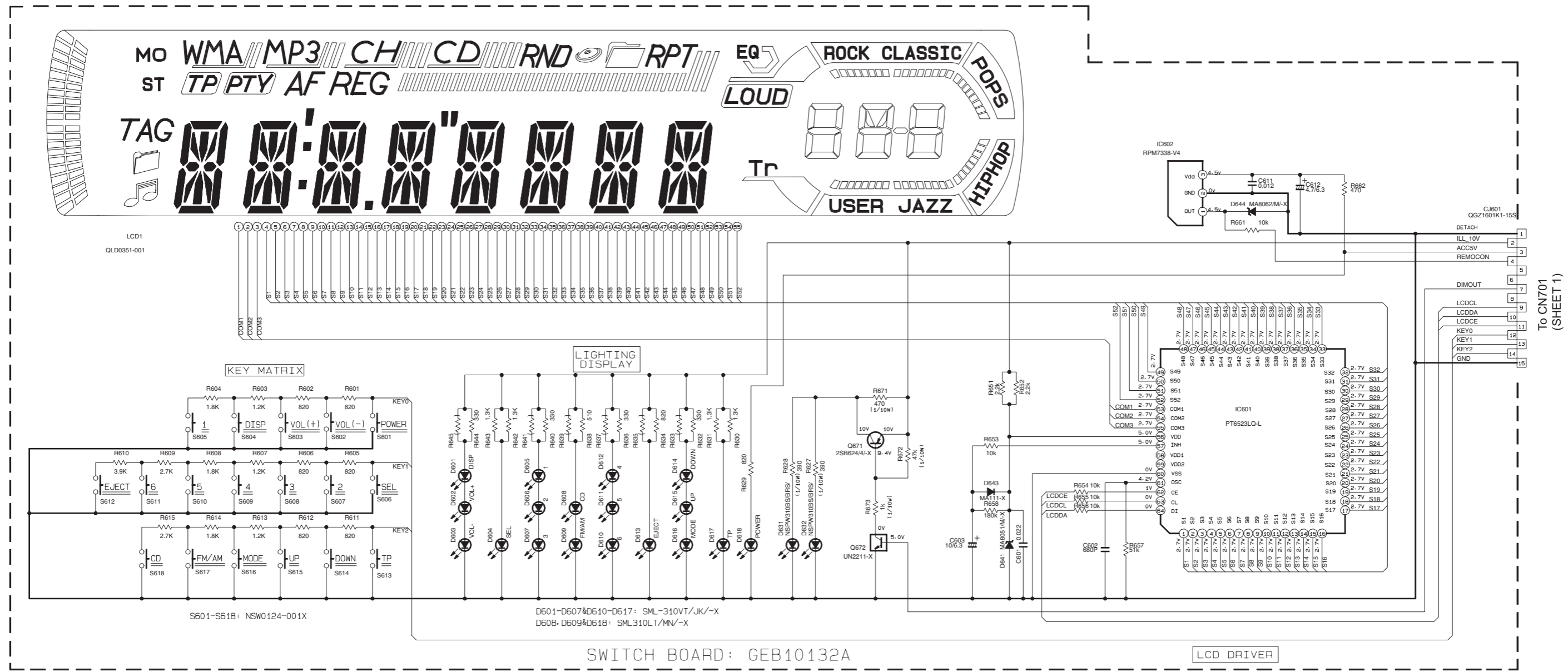


TO SHEET 1

NOTES  
 1. VOLTAGES ARE DC-MEASURED WITH A DIGITAL VOLT METER WITHOUT INPUT SIGNAL CONDITION --- CD MODE.  
 2. UNLESS OTHERWISE SPECIFIED, ALL RESISTORS ARE 1/16W ±5% METAL GLAZE RESISTOR. ALL CAPACITORS ARE 50V OR 25V CERAMIC CAPACITOR. ALL RESISTANCE VALUES ARE IN OHM. ALL CAPACITANCE VALUES ARE IN UF (P=PF)  
 ALL E. CAPACITORS ARE SHOWN IN THE FORM OF CAPACITANCE(UF)/RATED VOLTAGE(V)

MODEL KD-6317EE

■ LCD & Key control section



FRONT CIRCUIT BOARD SECTION

	10K	UN2211-X
	10K	UN2211-X

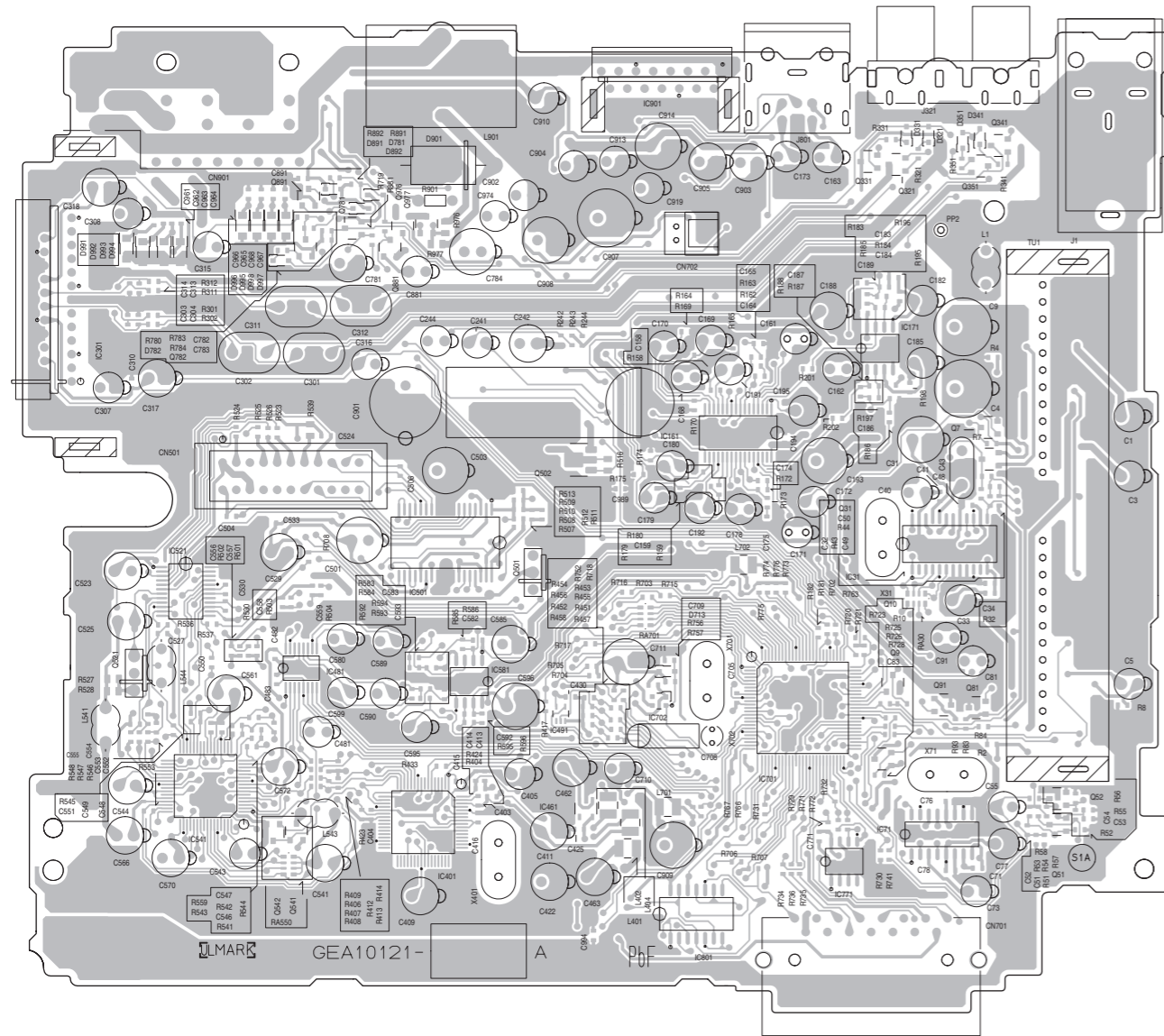
- NOTES
- VOLTAGES ARE DC-MEASURED WITH A DIGITAL VOLT METER WITHOUT INPUT SIGNAL.
  - UNLESS OTHERWISE SPECIFIED, ALL RESISTORS ARE 1/16W METAL GLAZE RESISTORS. ALL CAPACITORS ARE 50V OR 25V CERAMIC CAPACITOR. ALL RESISTANCE VALUES ARE IN OHM. ALL CAPACITANCE VALUES ARE IN uF (P=pF) ALL E. CAPACITORS ARE SHOWN IN THE FORM OF CAPACITANCE(uF)/RATED VOLTAGE(V) T --- TANTALUM CAPACITOR.
  - COMPONENTS IN ( ) INDICATE NOT USE.

MODEL KD-6317EE

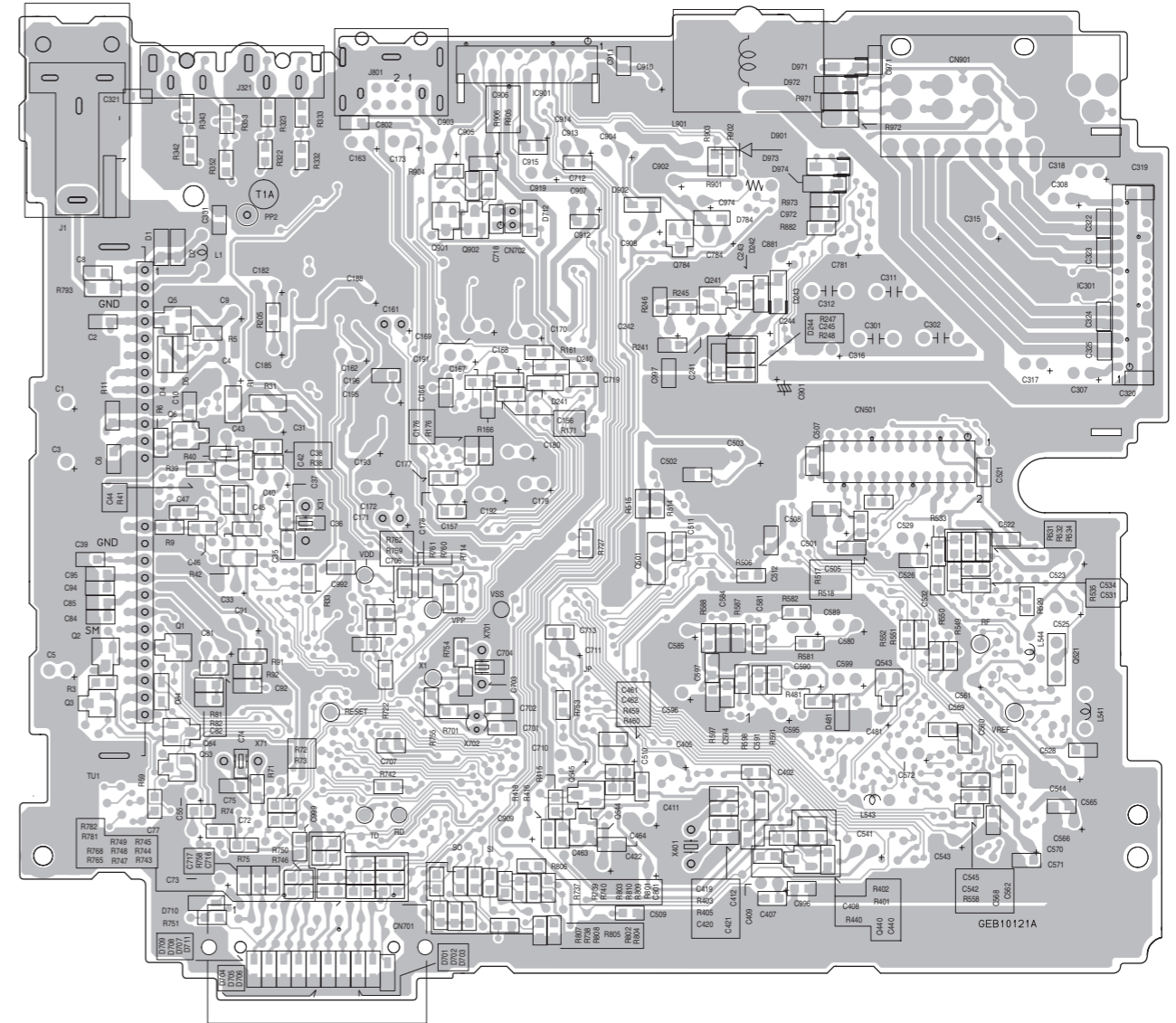
# Printed circuit boards (For KD-G317 EE version)

## ■ Main board

Forward side

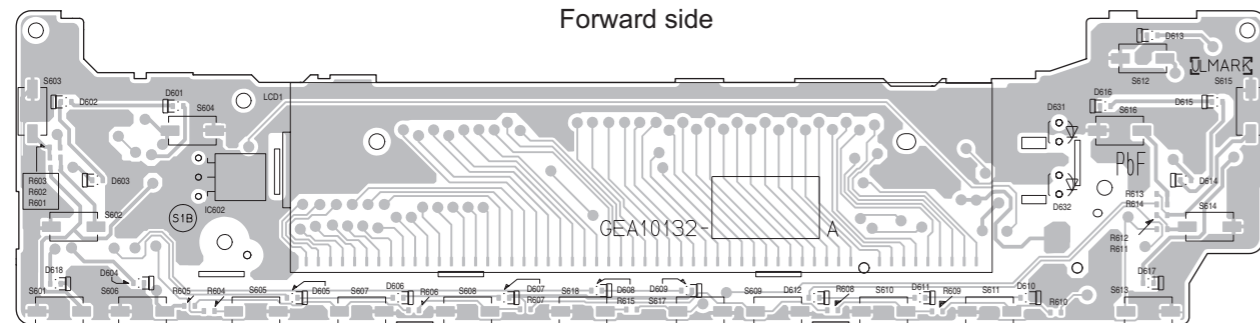


Reverse side

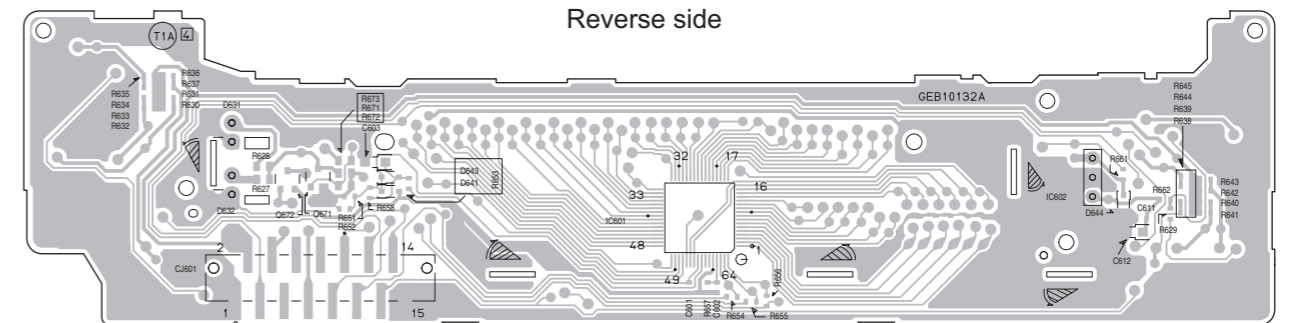


## ■ Switch board

Forward side



Reverse side

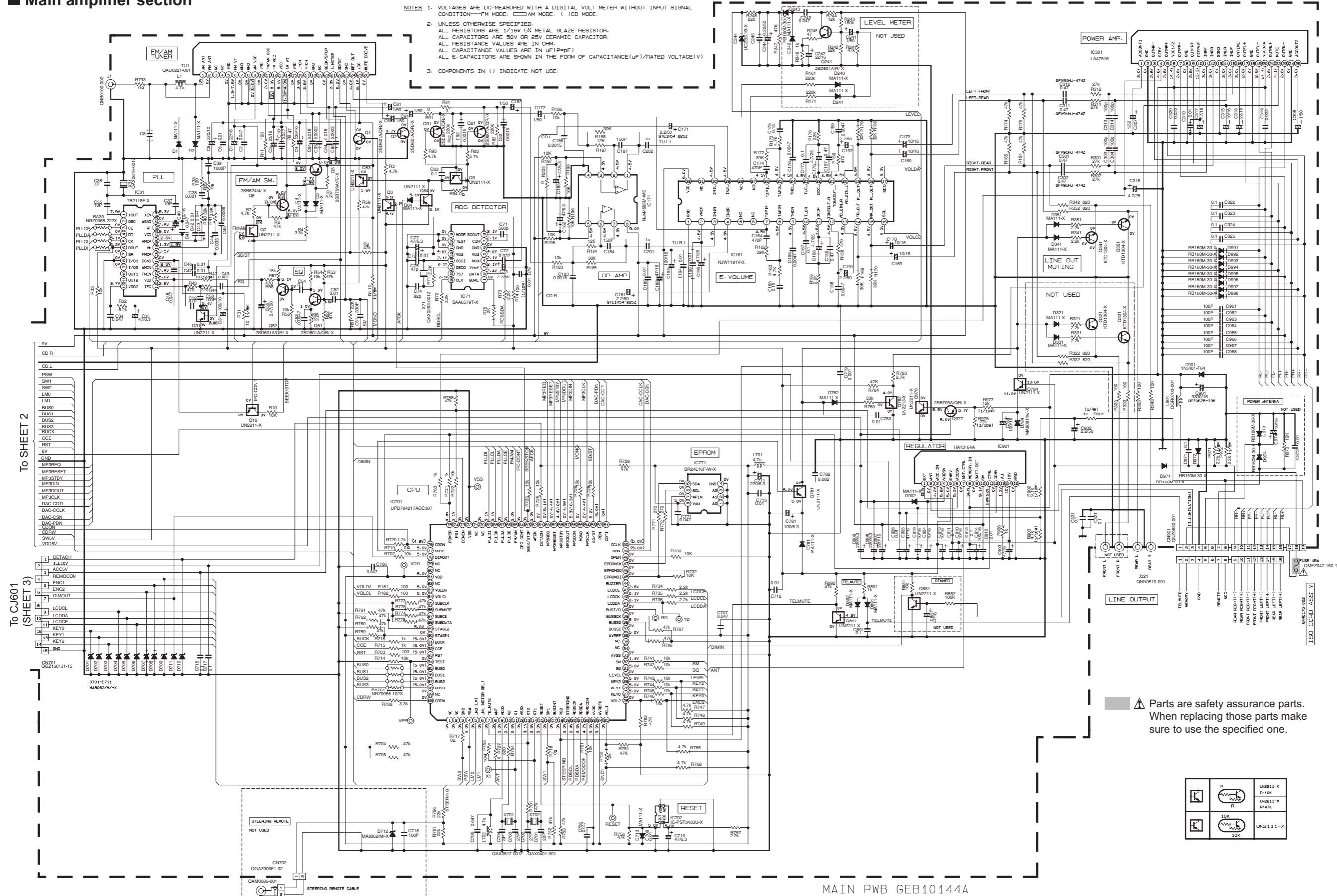




# Standard schematic diagrams (For KD-G317 EE2 version)

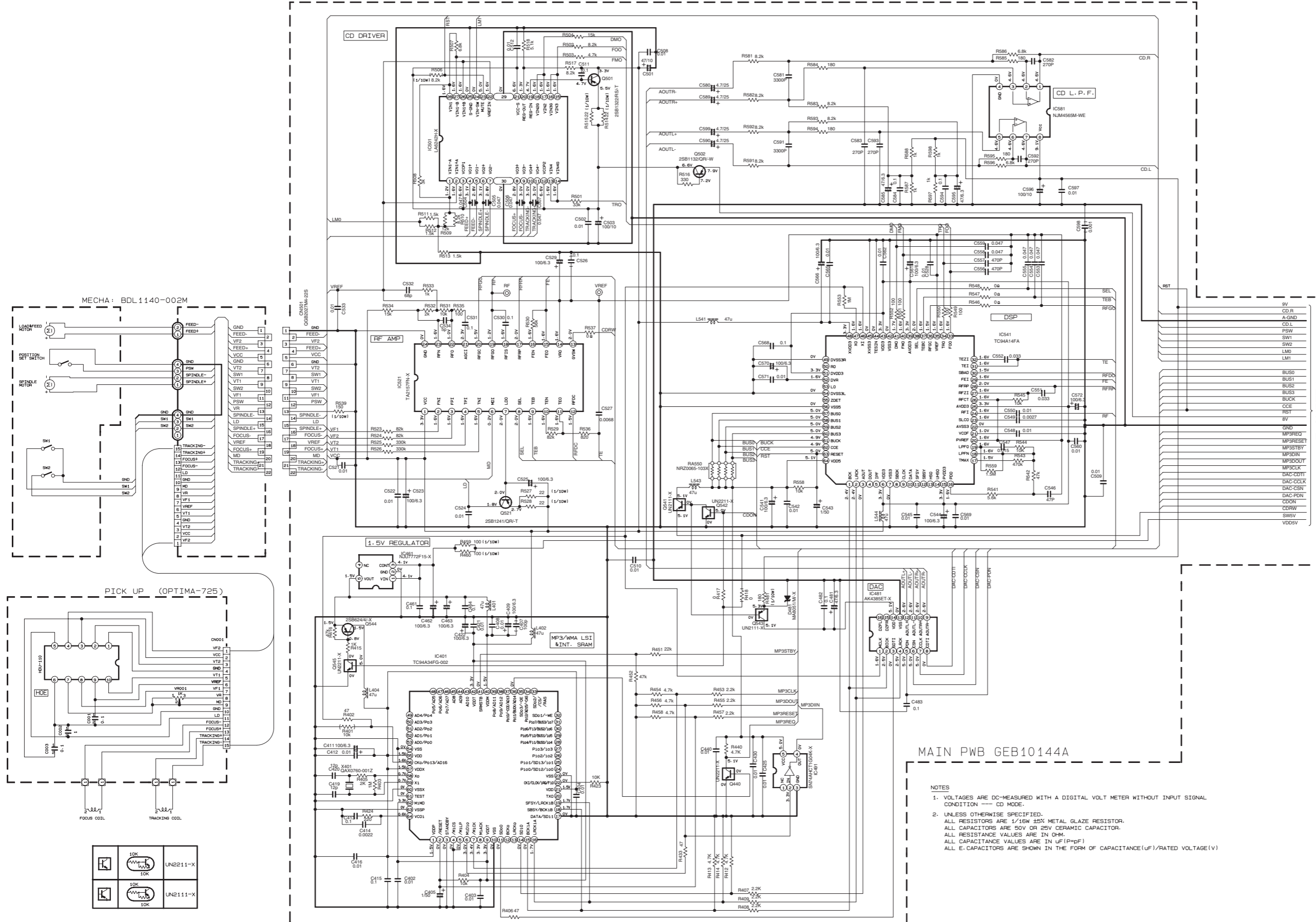
## Main amplifier section

- NOTES
1. VOLTAGES ARE DC-MEASURED WITH A DIGITAL VOLT METER WITHOUT INPUT SIGNAL CONDITION—FM MODE. □ AM MODE. ( ) CD MODE.
  2. UNLESS OTHERWISE SPECIFIED, ALL RESISTORS ARE 1/16W 5% METAL GLAZE RESISTOR. ALL CAPACITORS ARE 50V OR 25V CERAMIC CAPACITOR. ALL RESISTANCE VALUES ARE IN OHM. ALL CAPACITANCE VALUES ARE IN UF (P-PF) ALL E-CAPACITORS ARE SHOWN IN THE FORM OF CAPACITANCE(UF)/RATED VOLTAGE(V)
  3. COMPONENTS IN ( ) INDICATE NOT USE.



MAIN PWB GEB10144A

CD servo control section



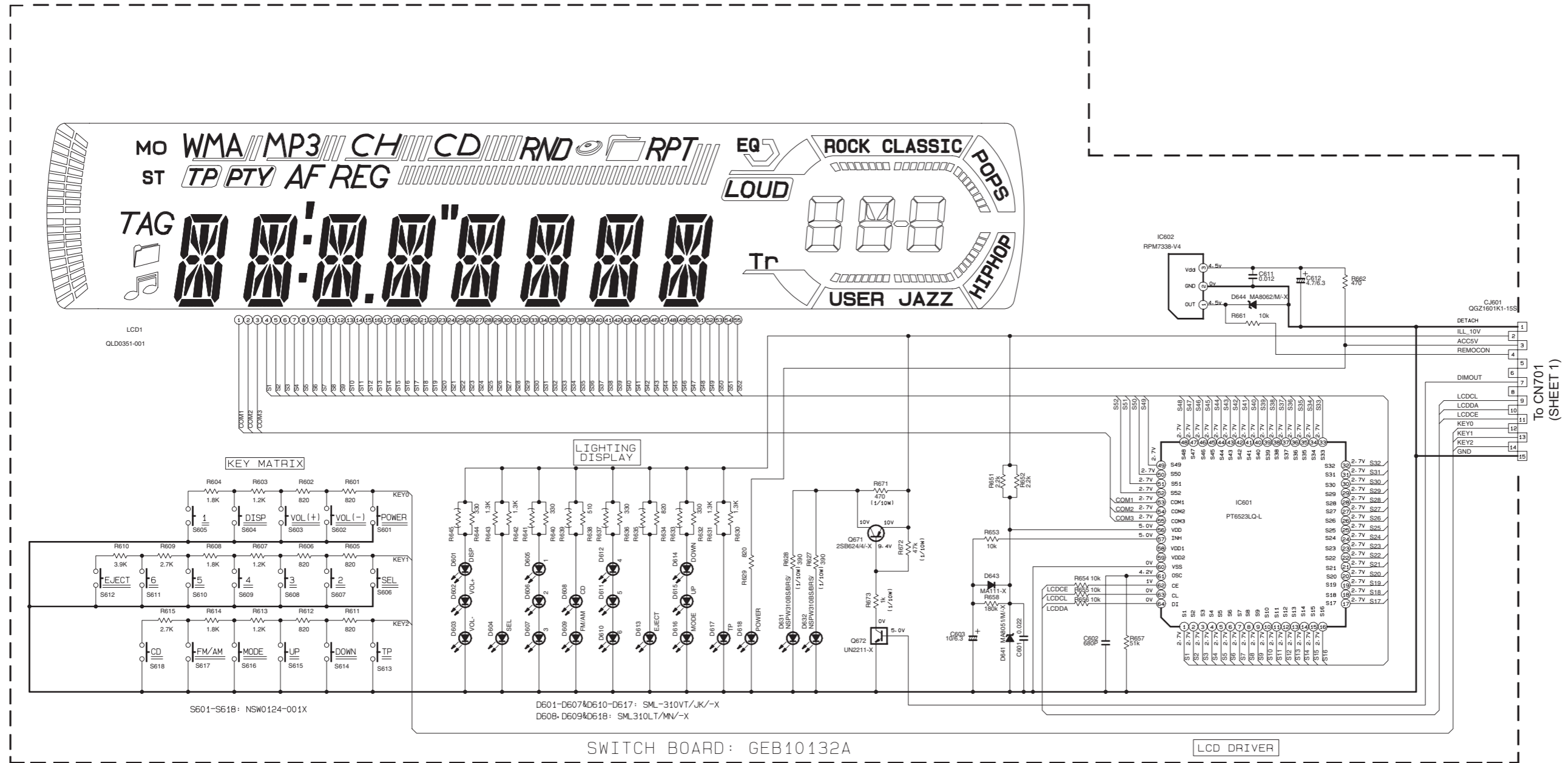
TO SHEET 1

MAIN PWB GEB10144A

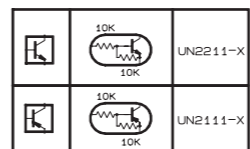
- NOTES
1. VOLTAGES ARE DC-MEASURED WITH A DIGITAL VOLT METER WITHOUT INPUT SIGNAL CONDITION — CD MODE.
  2. UNLESS OTHERWISE SPECIFIED, ALL RESISTORS ARE 1/16W ±5% METAL GLAZE RESISTOR. ALL CAPACITORS ARE 50V OR 25V CERAMIC CAPACITOR. ALL RESISTANCE VALUES ARE IN OHM. ALL CAPACITANCE VALUES ARE IN uF(P=pF) ALL E-CAPACITORS ARE SHOWN IN THE FORM OF CAPACITANCE(uF)/RATED VOLTAGE(V)

	10k	UN2211-X
	10k	UN2111-X
	10k	UN2111-X

■ LCD & Key control section



FRONT CIRCUIT BOARD SECTION

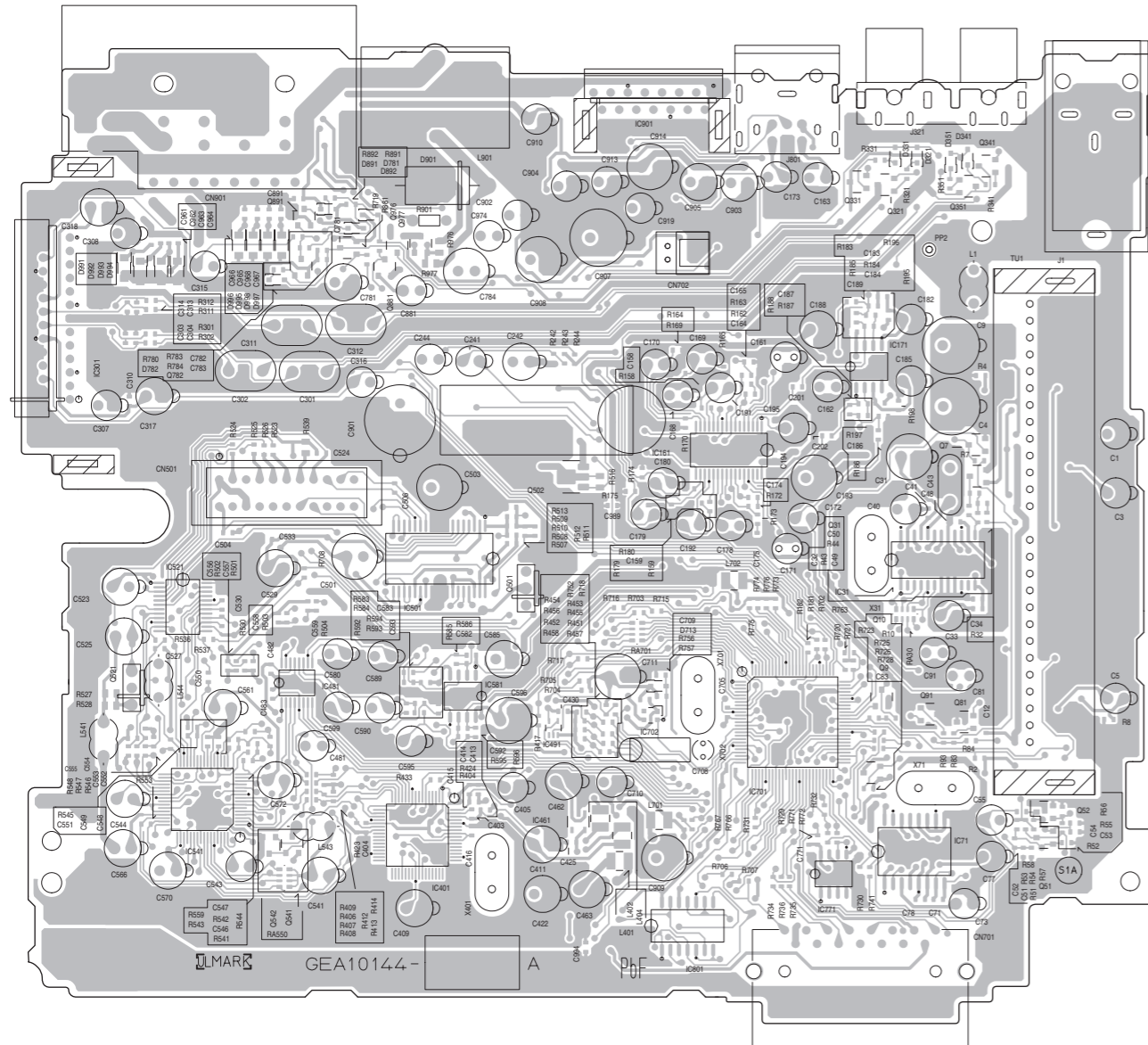


- NOTES
- VOLTAGES ARE DC-MEASURED WITH A DIGITAL VOLT METER WITHOUT INPUT SIGNAL.
  - UNLESS OTHERWISE SPECIFIED, ALL RESISTORS ARE 1/16W METAL GLAZE RESISTORS. ALL CAPACITORS ARE 50V OR 25V CERAMIC CAPACITOR. ALL RESISTANCE VALUES ARE IN OHM. ALL CAPACITANCE VALUES ARE IN uF (P=pF). ALL CAPACITORS ARE SHOWN IN THE FORM OF CAPACITANCE(uF)/RATED VOLTAGE(V). T --- TANTALUM CAPACITOR.
  - COMPONENTS IN ( ) INDICATE NOT USE.

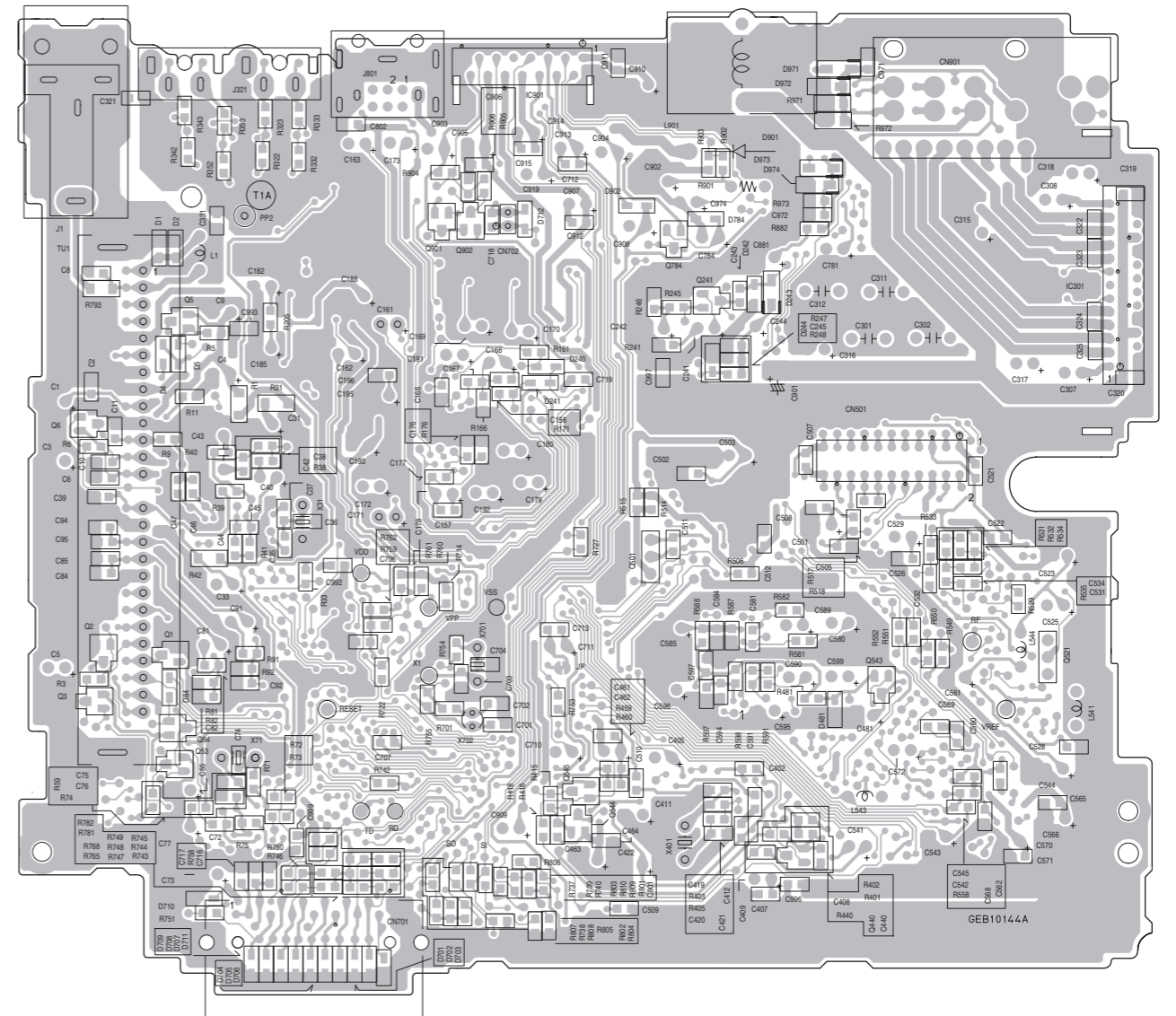
# Printed circuit boards (For KD-G317 EE2 version)

## ■ Main board

Forward side

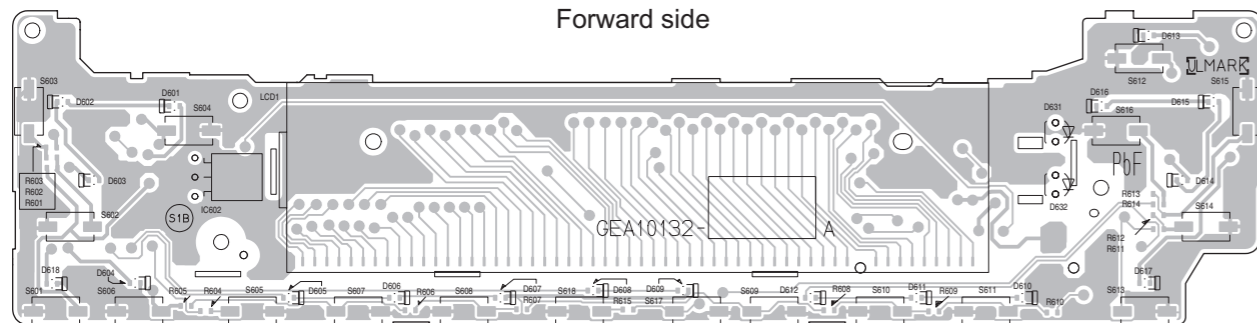


Reverse side

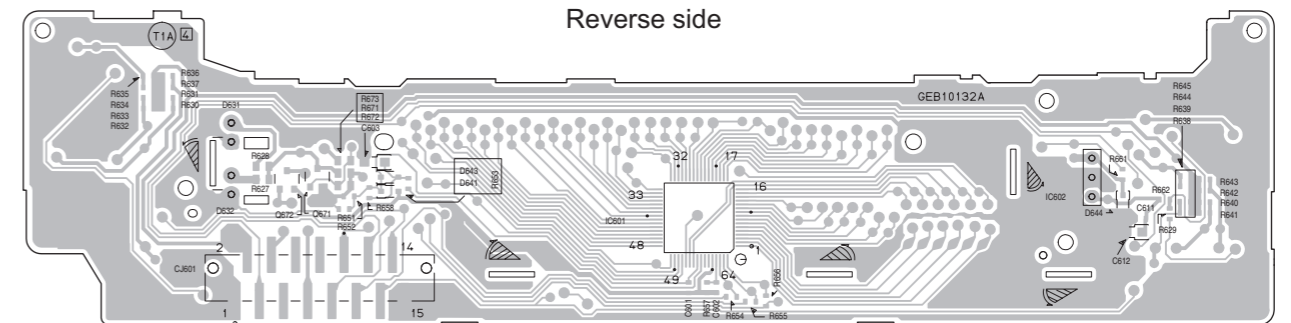


## ■ Switch board

Forward side



Reverse side



< MEMO >

**JVC**

Victor Company of Japan, Limited

AV & MULTIMEDIA COMPANY CAR ELECTRONICS CATEGORY 10-1, 1chome, Ohwatari-machi, Maebashi-city, 371-8543, Japan

(No.MA134SCH)



Printed in Japan  
VPT